



News letter

September 2015

This issue

- June Floods
- Flood Recovery
- NZ ShakeOut 2015
- Opunake flooding

June Floods



Waitotara Valley flood damage and township (inset)

Intense rainfall on Friday and Saturday 19 and 20 June resulted in widespread flooding, slips and severe disruptions to farmland and rural infrastructure, roading and electricity networks in rural Taranaki. Overall rainfall for the two day period was 150% of the total June average for Taranaki. The Taranaki Civil Defence & Emergency Management Emergency Operations Centre (EOC) was activated at approximately 10am on Saturday 20 June.

The rainfall resulted in the township of Waitotara being flooded and a state of emergency being declared at approximately 9pm on 20 June, followed by the evacuation of approximately 60 households. Waverley Civil Defence Centre (Waverley Community Centre) was established to register evacuees who needed assistance. Civil Defence Centre supervisor Christine How and the volunteer team did a fantastic job at the centre, taking registrations and helping those who needed emergency accommodation. A Civil Defence Centre was then established temporarily at Waitotara Hotel to allow people to register throughout the week, and to provide up-to-date information to the community.

While the Waitotara township was a significant immediate focus, households and farms in rural South Taranaki and central Taranaki were isolated due to numerous slips.

Cont. next page >

GET READY NOW...

Make sure you have:

- ▶ Household emergency plan
- ▶ Emergency survival items
- ▶ Getaway Kit



Civil Defence Emergency Management
24 hours - 0800 900 049

www.trc.govt.nz/civil-defence/

 twitter.com/taranakiCD

 www.facebook.com/TaranakiCivilDefence

RESPONSE AND RECOVERY



88 helicopter relief missions



100 families isolated



14M estimated infrastructure damage



4 homes deemed insanitary



1 family provided temporary accommodation



29 agencies dealing with event

During work hours

New Plymouth District callers **06 758 1110**

South Taranaki & Stratford districts **0800 900 049**

or you can email: emo@trc.govt.nz

June Floods

Cont. from page 1 >

Full recovery still requires a significant amount of time and resources, especially for farmers. An estimated 100 rural households were initially isolated because of impassable roads, and some were also without electricity. About 60 local rural roads throughout the region were blocked by slips and washouts. Roads were cleared as fast as possible, but in some cases repairs took weeks and in fact are still ongoing. The State Highway network was also disrupted, with access to the region severely restricted at one point with the temporary closure of SH3 and SH43.

On Sunday 21 June, approximately 800 Taranaki residents were without power. The damage to the local roads severely hindered contractors' ability to access power restoration sites. Power poles and transformers were submerged under water and slips took out whole sections of lines. Large areas of farmland were flooded and/or affected by slips.



Slips in central Taranaki were severe. There was significant damage to roads, culverts and bridges in the eastern hill country. Some roads were blocked by as many as 35 slips, temporarily isolating some residents. [Image courtesy of Stratford District Council.]



On Saturday 20 June there was a significant rise in the river levels at Waitara, but it did not really test the Taranaki Regional Council's recently upgraded flood control scheme for the town.

Recovery efforts

Significant efforts have been and continue to be made by various agencies and organisations to help with the clean-up and support those whose lives and businesses have been disrupted by the floods. The impact on the rural sector is much greater than was originally estimated and many hillcountry farms are facing months of work to reinstate their land, clear silt, repair fences and culverts and replant pasture and riparian strips.

The Taranaki Regional Council set up and is administering a \$500,000 Storm Recovery Package for assistance to reinstate or reduce damage to work that has been carried out under Council programmes.

Separately, the Taranaki Disaster Relief Fund Board – made up of the three District Mayors and the Chair of the Taranaki Regional Council, met and allocated funds to 55 applicants from across the region with the large majority of these being from the rural sector.

One crew of six from Enhanced Task Force Green continues to work within the South Taranaki hillcountry after completing clean-up work in the Waitotara township. This contract was initially for 10 weeks and has now been extended for a further six weeks until 16 October.

The three District Councils continue to work on the repairs to roads and bridges across the region. Latest estimates for repair and reinstatement total \$17 million for local roads and a further \$4 million for state highways.

The Ministries for Primary Industries and Civil Defence have announced an additional \$2.6 million of Government support which includes \$1.28 million to help with rural infrastructure repair.



Relief packages were flown out to families in remote rural areas.

A meeting with Ministry representatives has been held to discuss how this funding might be distributed across the affected regions and what criteria there may be around how this funding is utilised.

The Government support also includes additional funding of up to \$500,000 for Enhanced Taskforce Green for further clean-up assistance. Discussions are being held with key agencies and the territorial local authorities to determine whether Enhanced Taskforce Green could be utilised across Taranaki to assist farmers with clean-up.



Civil Defence Emergency Management
24 hours - 0800 900 049

www.trc.govt.nz/civil-defence/
twitter.com/taranakiCD
www.facebook.com/TaranakiCivilDefence

New Plymouth District callers **06 758 1110**
South Taranaki & Stratford districts **0800 900 049**
or you can email: emo@trc.govt.nz



Get ready to ShakeOut!

9:15am, 15 October 2015



Thursday 15 October is the International ShakeOut Day of action.
New Zealand will be the first country to participate this year, at 9.15am!

Sign up to take part

We're aiming to get 1.5 million New Zealanders – which should also make ours the biggest (per capita) ShakeOut drill in the world!

By signing up, you, your family or your organisation will be better prepared to survive and recover quickly from a damaging earthquake.

Once you've signed up we'll keep you up to date with all the information you need to take part in the Drop, Cover and Hold drill.

ShakeOut - Its as easy as 1, 2, 3!

- 1 Sign up now!** Go to www.shakeout.govt.nz (it only takes two minutes).
- 2 Spread the word** - tell your friends, family and workmates. (Share on Facebook, Twitter, etc)
- 3 Do the Drop, Cover and Hold drill at 9:15am, 15 October 2015.**

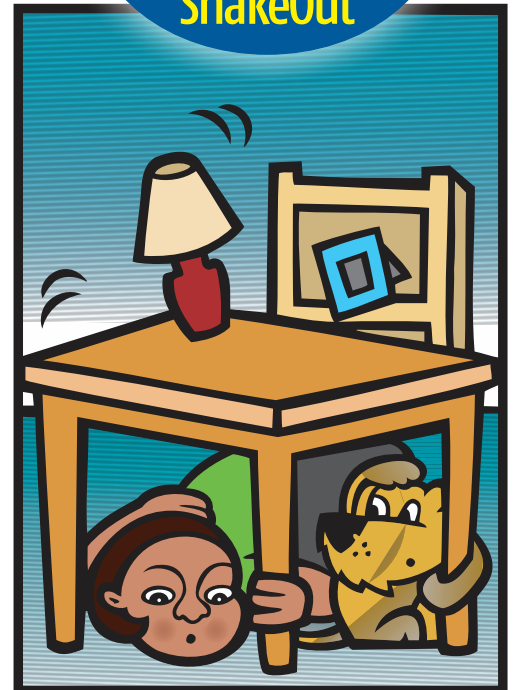
www.shakeout.govt.nz



NZ Get Thru



@nzgetthru



Te Kaunihera-a-Rohe o Ngāmotu
NEW PLYMOUTH DISTRICT COUNCIL
newplymouthnz.com



Opunake Flooding



On 6 August 2015, Opunake received 242mm of rain within 24 hours. The peak rainfall was between 40mm and 45mm in an hour. Ten properties were affected by flooding after the local retention pond overflowed. Sandfords Event Centre was activated as the Civil Defence Centre for people requiring assistance. One couple were accommodated temporarily at the Opunake Motel. South Taranaki District Council staff completed local impact assessments of affected properties and lifelines.

Above: King Street inundated by rain, while partial flooding closed SH45 between Opunake and Pihama.

Left: St Joseph's Primary School closed for the day.

[Images courtesy of South Taranaki District Council.]

Check your emergency survival items

The beginning of daylight saving is a good reminder to check your emergency survival items and getaway kit.

Emergency Survival Items

- ✓ Torch
- ✓ Radio
- ✓ Spare batteries
- ✓ Food for at least three days
- ✓ Emergency water
- ✓ First aid kit
- ✓ Pet food
- ✓ BBQ or camping cooker
- ✓ Face and dust masks



Are you prepared for an emergency? Visit
www.getthru.govt.nz

**GET READY
GET THRU**

