

WHAT'S THE PLAN STAND?



Activity book!



Civil Defence
and Emergency Management
Te Rakau Whakamarumaru



TARANAKI
EMERGENCY MANAGEMENT

WHAT'S THE PLAN

THIS BOOK BELONGS TO:

.....

.....

.....



STAN?



Activity and colouring book

Make sure you check out our website for quizzes,
clips, pics and more!

www.whatstheplanstan.govt.nz

Intro

Earthquakes, floods, storms, tsunami, volcanic eruptions, fires...

Disasters come in all shapes and sizes and can be pretty scary to think about! But if you understand what you need to do then you'll be better prepared for when they do happen.

Colour Stan in!



Earthquake

Q: What do you get when you cross a cow with an earthquake?
A: A milkshake!

There are thousands of earthquakes in New Zealand every year. Most go unnoticed, but a BIG earthquake can happen at any time and can cause lots of damage.

Uh oh! Earthquake! Solve the clues and write the answer in the boxes provided. You will reveal the answer to Stan's riddle in the yellow column.

D	R	A	G	Pull, tow
				Cord, twine
				Opposite of closed
				Sound a cat makes
				Fry, bake
				Opposite of under
				What do you put your flowers in?
				Happily _ after
				What you do with a book
				House
				What do you row a boat with?
				Baby sheep
				Opposite of up

Tips:

Practice your earthquake drill:
DROP, COVER and HOLD
(onto something).
Get under a strong table
if one is close.



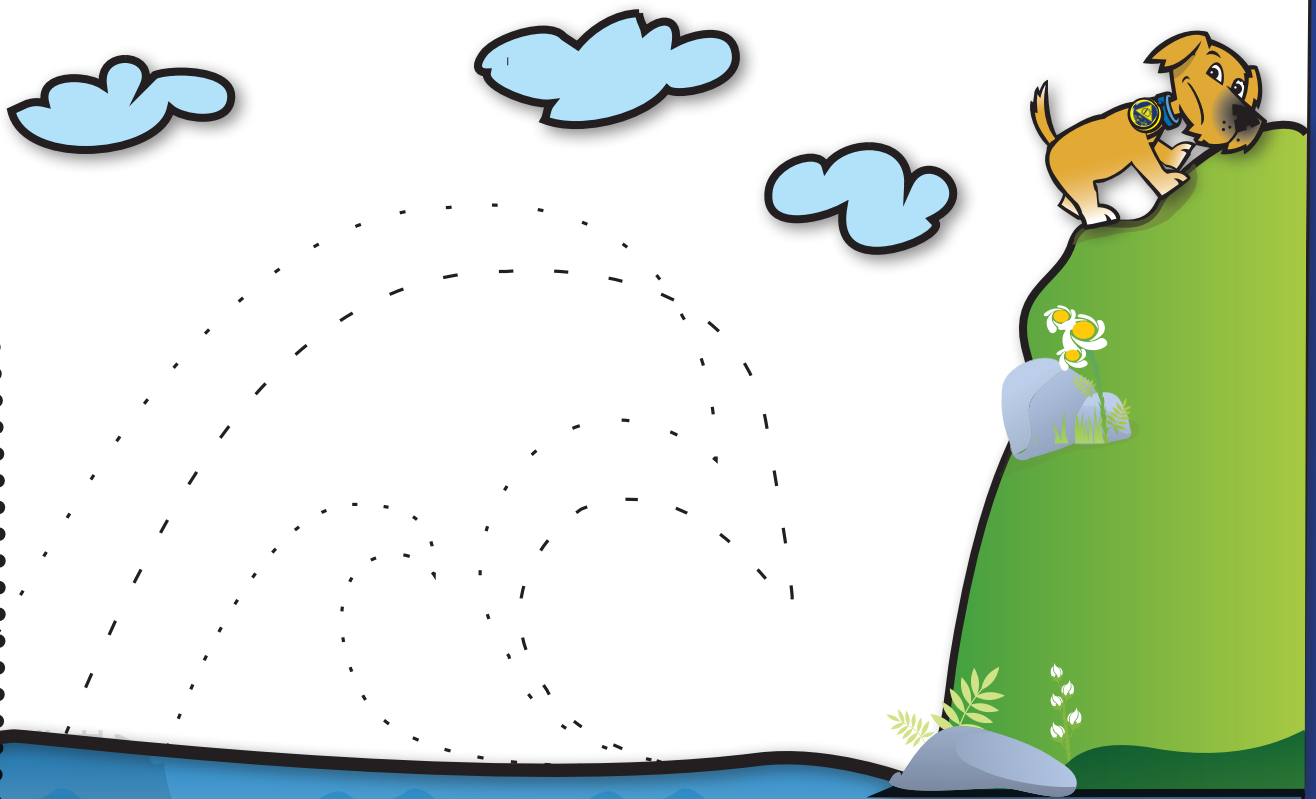
Tsunami

A tsunami is a series of waves, often caused by an earthquake or volcanic eruption.

Tsunami waves can wash people and objects out to sea, and can cause a lot of damage.

Join the dots!

Stan is moving to higher ground. Find out what he's trying to escape from...



Tips:

Find out if your home or school could be struck by a tsunami. If there is a tsunami warning and you're close to the sea go to higher ground or inland.

Floods

Q: What did the sea say to the shore?
A: Nothing, it just waved.

Floods happen as a result of storms and heavy rain causing rivers to overflow their banks.

Fast-flowing water can sweep away people, animals and even cars.

Flood quiz!

1 If there is a flood warning, what should your family do with household chemicals?

- A: Tip them down the drain
- B: Move them to a high place like the attic
- C: Put them outside

2 It's flooding outside! Should you...

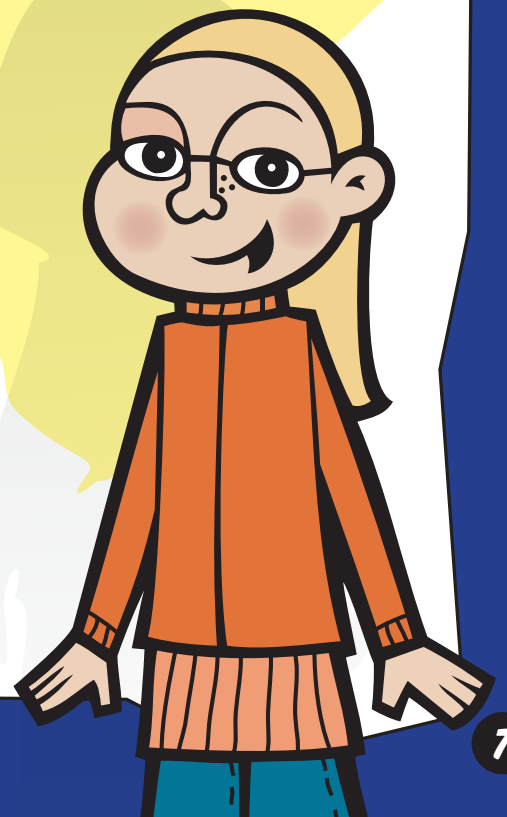
- A: Leave the electricity on so you can listen to the radio
- B: Turn all the lights in the house on so that emergency workers know you're home
- C: Remind adults to turn off water, electricity and gas

3 The flood is getting higher, should you...

- A: Move to higher ground
- B: Go sightseeing
- C: Turn off the radio to save batteries

Tips:

Know how to reach the nearest high ground from where you live. Remind adults to turn off water, electricity and gas.



Volcano

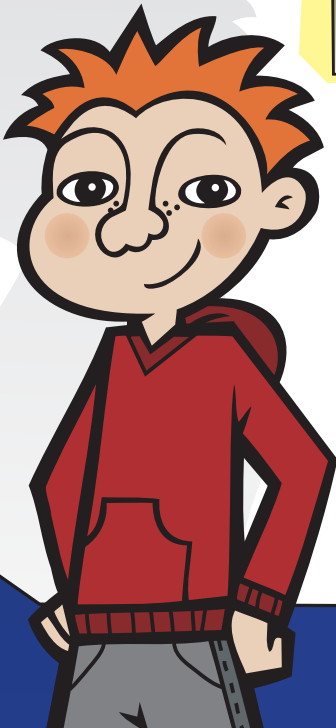
Did you know that New Zealand is situated on the 'Ring of Fire', a belt encircling the Pacific Ocean that contains about 90% of the Earth's volcanoes? In Auckland alone there are more than 50 dormant volcanoes. A new one could erupt at any time.

Volcanic word jumble!

Complete the wordfind to find as many of Auckland's volcanoes as you can! Words are arranged up, down, across and diagonally.

- Albert Park
- Duders Hill
- Kohuora
- Mount Smart
- Pukekiwiriki
- Panmure Basin
- Rangitoto
- Three Kings
- Waitomokia
- One Tree Hill

D	V	O	R	A	N	G	I	T	O	T	O	Y	D	A
K	N	B	B	O	H	C	Q	Q	F	O	B	P	U	T
H	G	U	C	Q	Q	Y	Y	T	N	K	A	U	D	R
W	T	W	D	J	K	Q	R	E	R	N	U	K	E	A
N	D	T	U	T	H	G	T	A	M	F	H	E	R	M
W	M	X	D	P	Z	R	P	U	M	A	S	K	S	S
C	M	J	X	F	E	T	R	A	S	R	B	I	H	T
D	D	A	X	E	R	E	G	I	T	O	X	W	I	N
B	X	V	H	E	B	V	Q	A	O	U	U	I	L	U
D	W	I	B	A	N	T	A	S	T	H	D	R	L	O
T	L	L	S	W	A	I	T	O	M	O	K	I	A	M
L	A	I	B	O	C	F	C	S	J	K	F	K	F	I
Z	N	Y	L	L	X	S	G	H	W	C	D	I	Z	S
S	T	Z	E	T	S	G	N	I	K	E	E	R	H	T
D	V	A	U	R	M	U	H	T	O	I	V	G	Y	H



Tips:

During an eruption listen to the radio for instructions and stay indoors.

Storm

Q: What kind of shorts do clouds wear?

A: Thunderwear!

Storms can cause all sorts of hazards including falling trees, fast-flowing currents in streams and rivers, snowstorms, landslips and flooding.

Can you identify the dangers in this picture while you colour it in?



Tips:

Stay away from doors and windows. If the wind breaks any windows, shelter further inside the house.



Tornado

Tornadoes are fast rotating funnels of air that often occur during thunderstorms. In Taranaki, one or two tornadoes form every year, but they only last for about 15 minutes unlike tornadoes in the United States that can last for hours. They can damage buildings and trees and even lift the roof off a house.

Spot the difference!

Find six differences between the two pictures below...



Tips:

If you're outside, get away from any trees and lie down in a gully or ditch and protect your head.

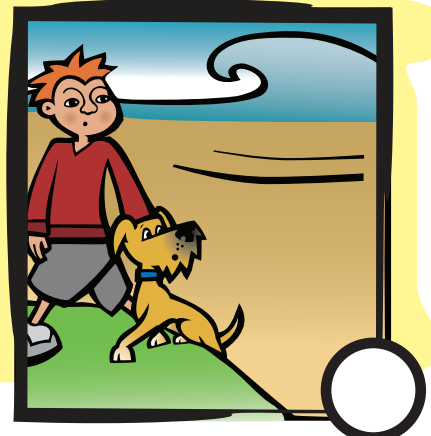
Non-natural

Q: What's a tornado's favourite game?
A: Twister!

Not all emergencies are caused by the forces of nature. Wildfires, infectious disease and chemical spills can all be caused by human activities, but this doesn't make them any less dangerous.

Are the disasters below non-natural?

Tick as you go...



Can you think of a disaster that might be caused by people?

Draw it here!

Survival Items

Q: What do firemen put
in their soup?
A: Fire crackers!

Circle the items you should have ready for an emergency:



Tips:

Simple activities like washing
your hands are very important
when a disease is spreading.

Your Pets

Q: Why do you need a licence for a dog but not for a cat?
A: Cats can't drive!

During a disaster your pets need to be looked after too. Remember to include them in your family's emergency plan.

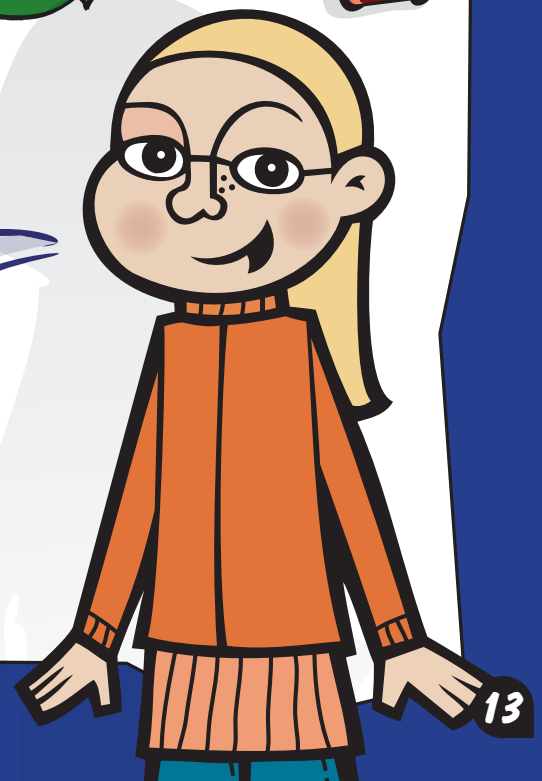


Help Stan find his getaway kit so his family can transport him to safety!



Tips:

Make sure your pet's collar has a name tag with your name, phone number and address.

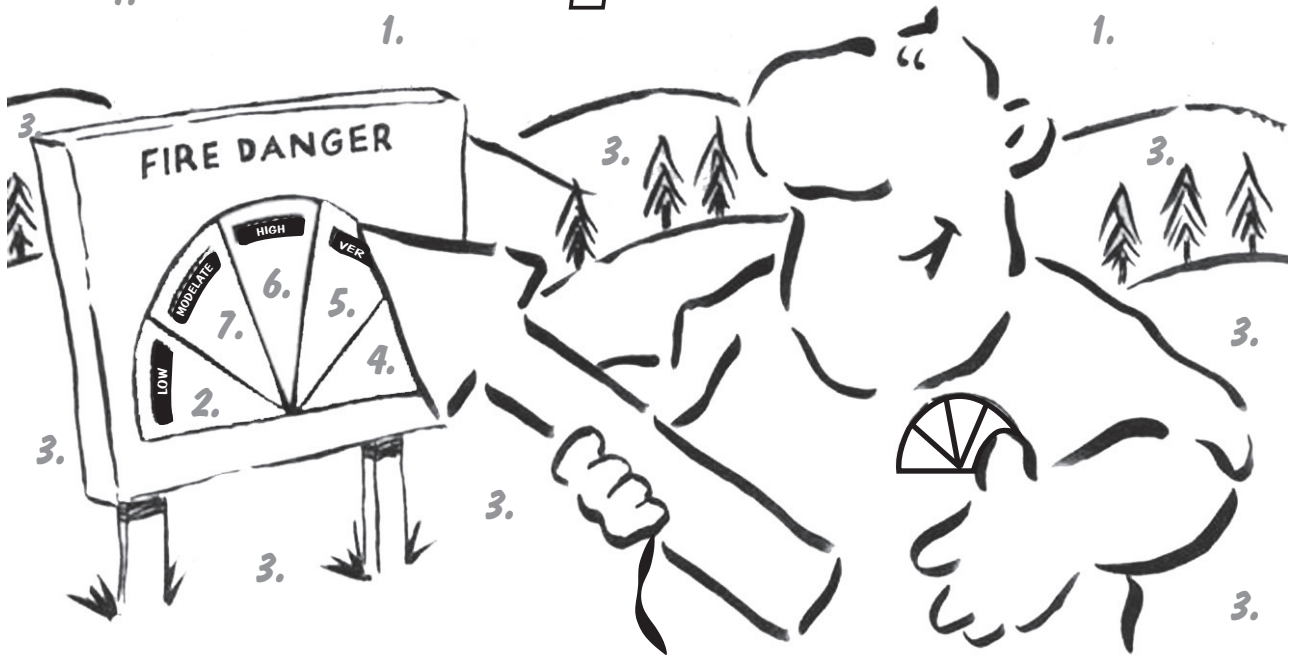


Colour by Number

Q: A firefighter had two sons.
What did he name them?
A: Hosea and Hoseb!

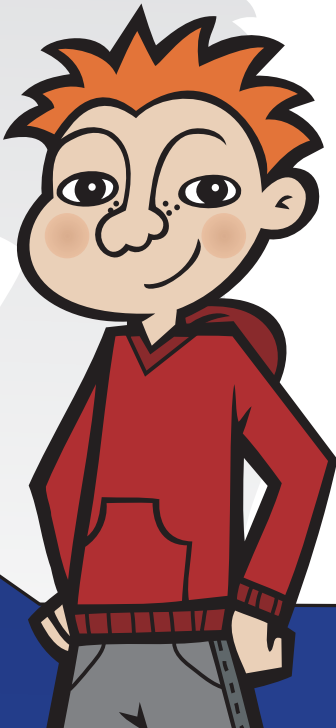
8. C'mon

2. Keep it Green



REFERENCES:

1. Light Blue, 2. Dark Green,
3. Light Green, 4. Red, 5. Orange,
6. Yellow, 7. Dark Blue, 8. Black



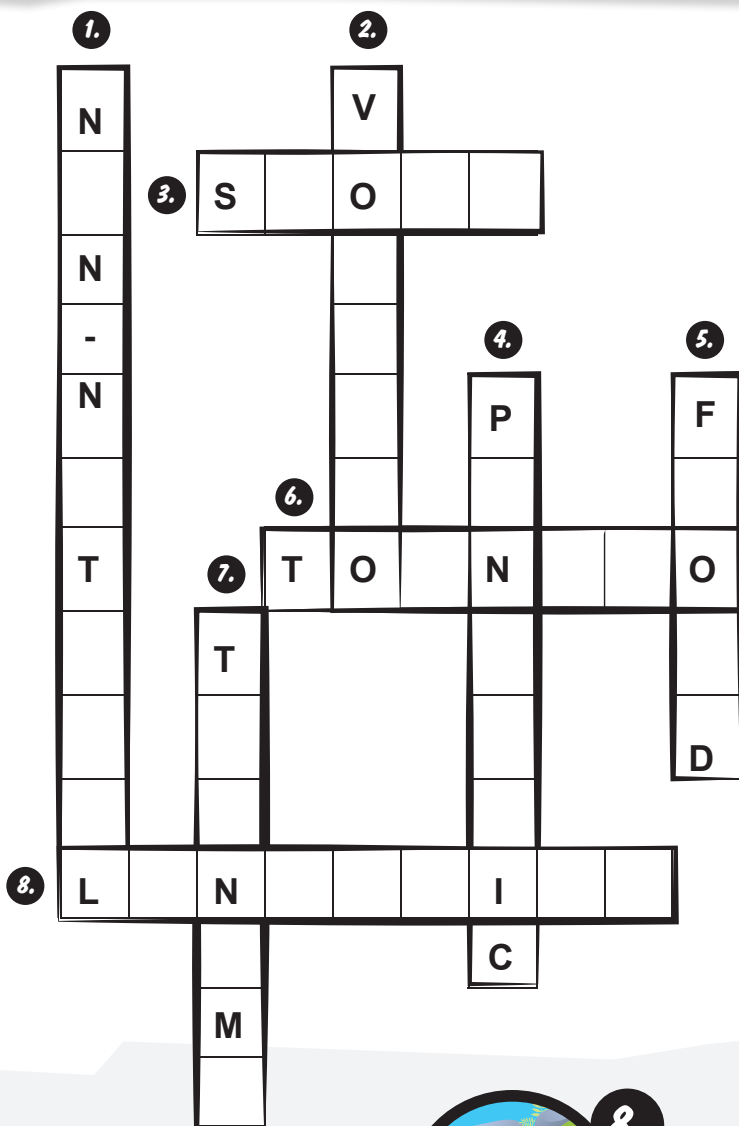
Fact:

If caught in a wildfire,
where is the safest area to shelter?

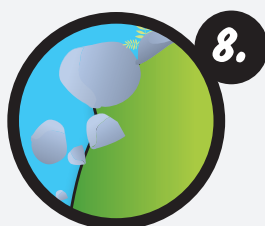
Answer:

Previously burned ground.

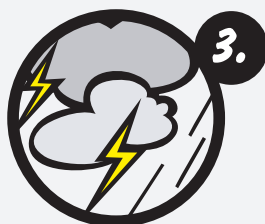
Disaster Crossword



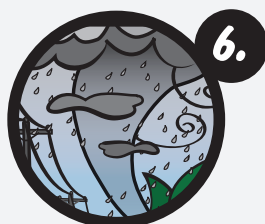
Across:



L _ N D S _ I _ _



S _ O _ _



T O _ N _ _ O

Down:



N _ N - N _ T _ _ _ L



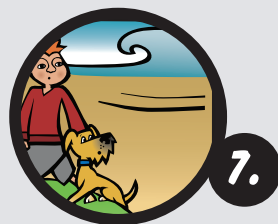
V O _ _ _ _ _



P _ N D _ _ I C



F _ O _ D



T _ _ N _ M _

Your family plan

Your family should have a plan for what to do if there is an emergency. See how your family scores on the questions below:

1) *Where should you shelter in an earthquake? e.g. under a strong table*

2) *If your family isn't together when disaster strikes, where will you meet?*

Talk to your family and decide on a good meeting place.

3) *Have you got survival items? If yes, list them here:*

4) *Who will pick you up from school in a disaster?*

5) *Find out the names of your neighbours and write them here:*

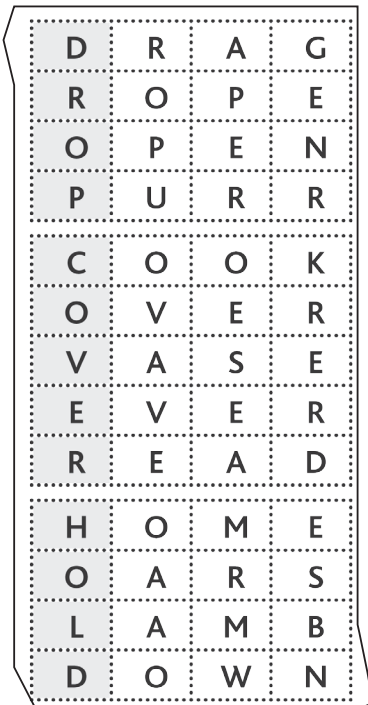
6) *Where will you leave a message for your family if you can't get home or contact each other?*

Draw your house!

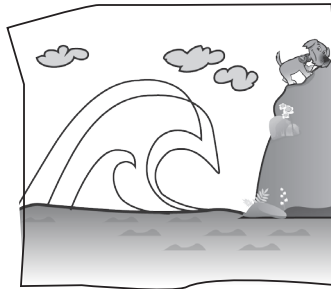
- 1) Mark the location of your emergency survival items.
- 2) Mark the strongest parts of your house where you would shelter during an earthquake or storm.

Answers!

Earthquake (p5)



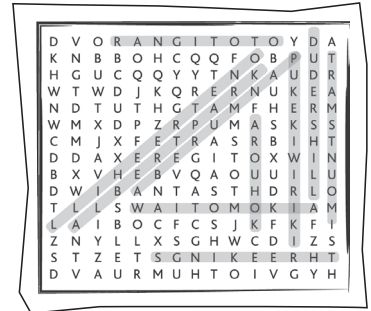
Tsunami (p6)



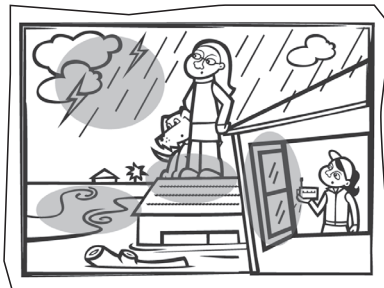
Flood (p7)

- 1) B
- 2) C
- 3) A

Volcano (p8)



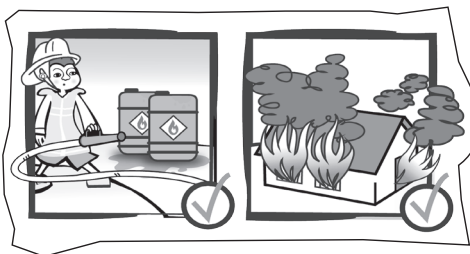
Storm (p9)



Tornado (p10)



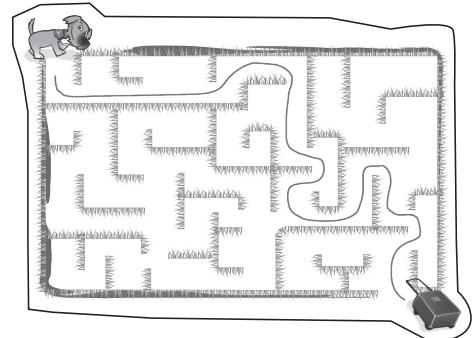
Non-Natural (p11)



Survival Items (p12)



Your Pets (p13)



Colour by Number (p14)



Disaster Crossword (p15)

DOWN:

1. Non-natural



2. Volcano



4. Pandemic



5. Flood



7. Tsunami



ACROSS:

3. Storm



6. Tornado



8. Landslide



GET READY GET THRU



- Learn about the disasters that can affect you
- Create and practice a household emergency plan
- Assemble and maintain emergency survival items
- Have a getaway kit in case you have to leave in a hurry

To request the above resources or for more information:
visit www.cdemtaranaki.govt.nz or
call **0800 900 049**

Immediately following an emergency:

- If it is safe, stay where you are
- If it is NOT safe where you are, go to a safe place
- In both cases listen to your radio for instructions from Civil Defence

National Radio	101.2 FM / 918 AM
Newstalk ZB	96.4 FM
Classic Hits	90.0 FM / 91.2 FM
Radio Live	89.2 FM
More FM	93.2 FM / 96.4 FM 92.4 FM / 100.0 FM

 TaranakiCivilDefence

 TaranakiCD

**IN AN EMERGENCY
DIAL 111 FIRST**



Civil Defence
and Emergency Management
Te Rakau Whakamarumaru



WHAT'S THE PLAN STAN?



Make sure you check out our website for
quizzes, clips, pics and more!
www.whatstheplanstan.govt.nz



Civil Defence
and Emergency Management
Te Rakau Whakamarumaru



TARANAKI
EMERGENCY MANAGEMENT